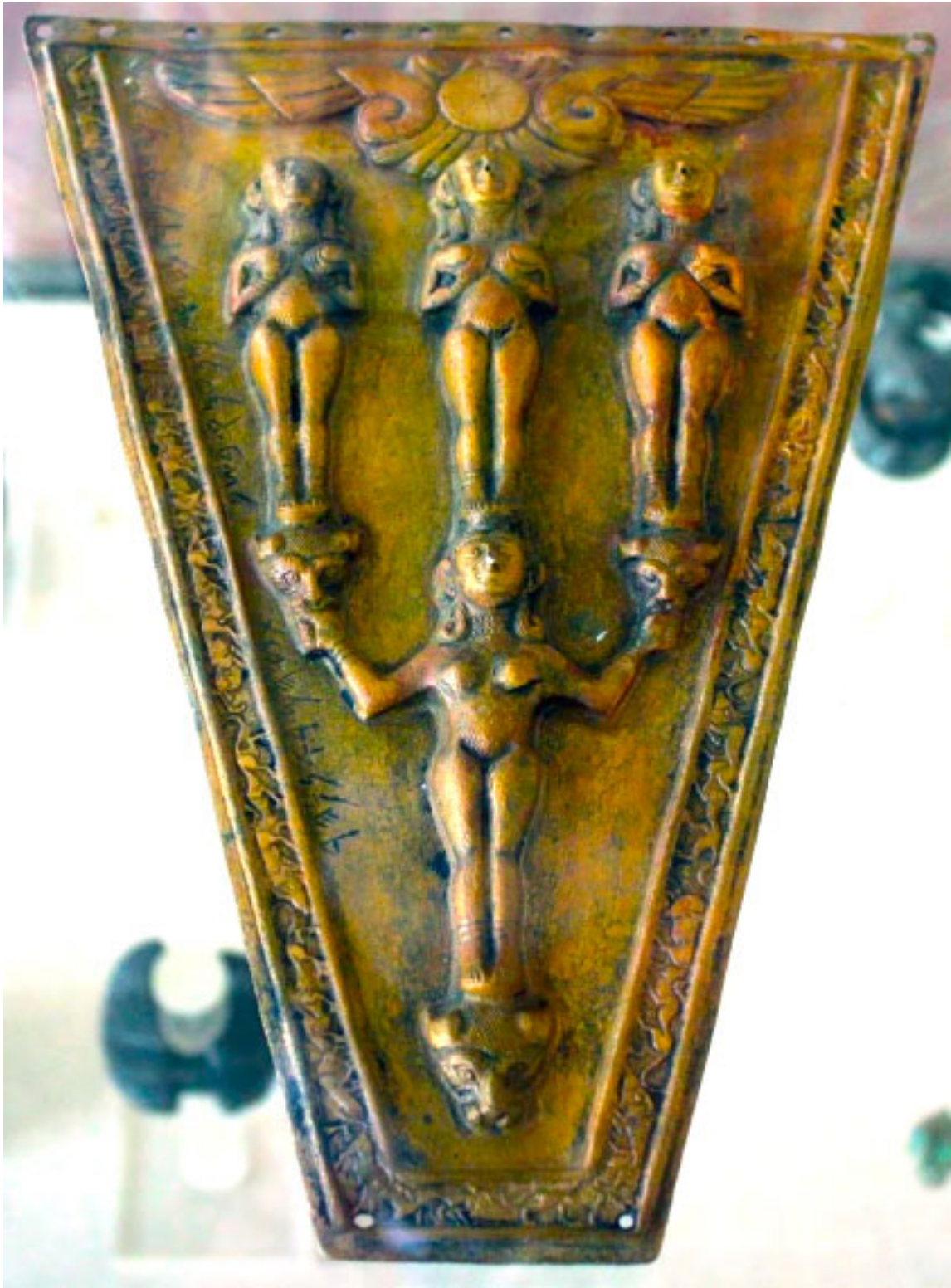
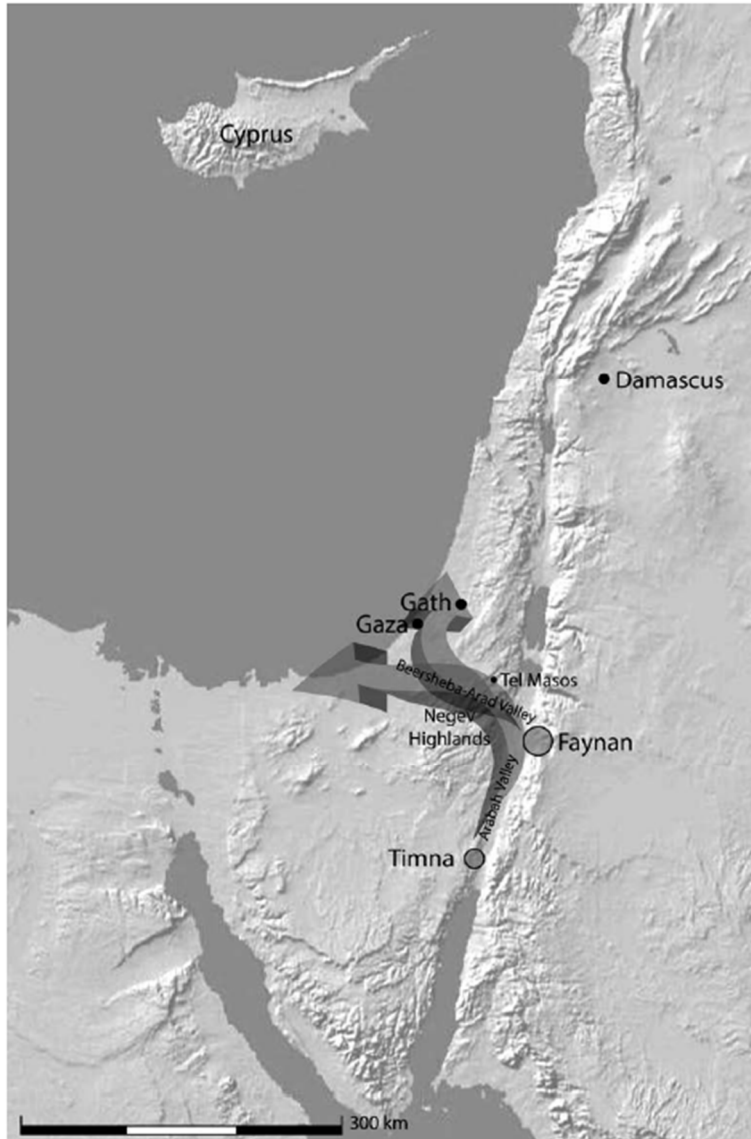


Episode C21 Images



Hazel horse frontlet in the Archaeological Museum of Vathi in Samos. By Onceinawhile - Own work, CC BY-SA 4.0, <https://commons.wikimedia.org/w/index.php?curid=113891658>



Map showing Gath in relation to the Arabah Valley, Damascus and Cyprus
(excerpted from Reference [5]).